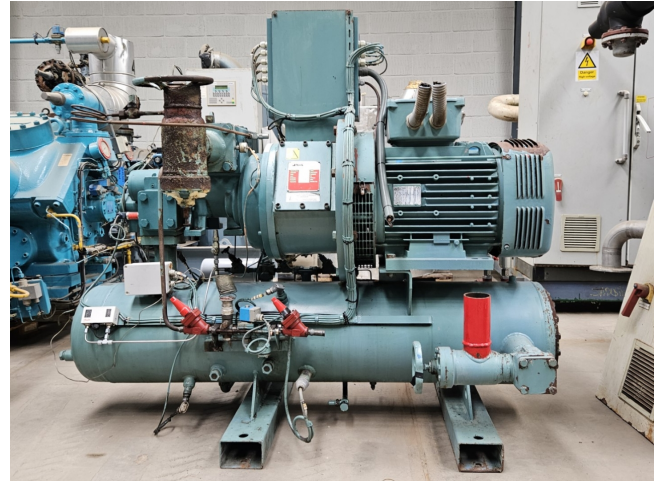


Sabroe XJF120S / RXF 50

Specifications

Marca	Sabroe
Tipo	XJF120S / RXF 50
Refrigerante	NH 3 (ammonia)
Electromotor Specs	50/60 Hz - 90/103 kW - 2955/3535 RPM
Piston Descargador	✓
Control de capacidad	✓
Sober Bancada	✓
Presostatos	✓
Separador de aceite	✓
Valvula Solenoide	✓
Panel de control	✓
Comentarios	Y.o.b. 2005
Tamaños	2190x1150x1740 mm (LxWxH)
Stock	1



Description

Used Sabroe XJF120S / RXF 50

Used Sabroe RXF 50 compressor unit on R717 (NH3). Complete with a Sabroe XJF120S screw compressor, Leroy Somer PLS250SP-T electro motor: 50/60 Hz - 90/103 kW - 2955/3535 RPM, oil separator with a volume of 220 liter and a control cabinet with a Frick RXF display panel.

*Why choose for HOSBV? Were not only the largest used refrigeration specialist in Europe, but also, we deliver all equipment including an extensive test, warranty and industrial cleaning.

*Optional we can also perform a new paint job and arrange the logistics.

